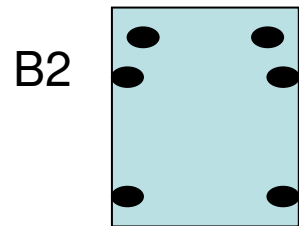
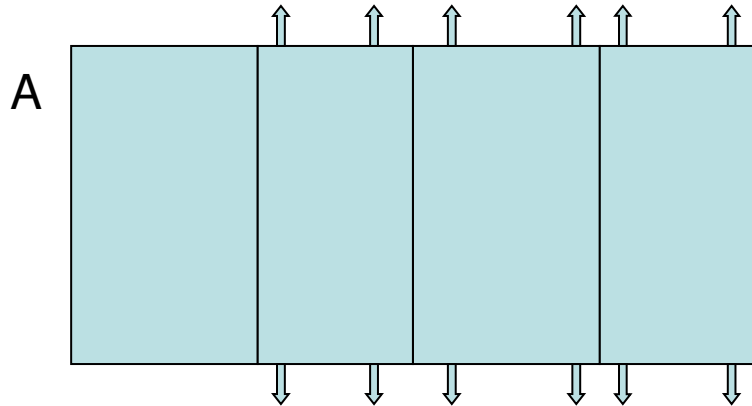
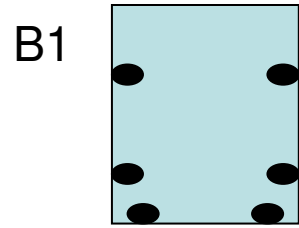


Each LocDocBox consists of 3 pieces:

A = 4 sides attached to form one long piece

B1 = Side 1

B2 = Side 2



### Step 1:

Place side B1 on a flat surface (table or floor) with the Turtle Logo facing the floor.

### Step 2:

Fold the 4 sided piece A to form a square, with the prongs facing down and onto the holes in side piece B1. You do NOT have to place pressure on the piece to make the prongs penetrate the side piece yet.

### Step 3:

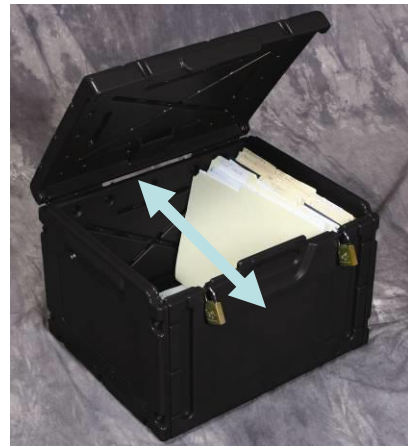
Place side B2, with Turtle logo facing up, on top of the prongs that are facing up - aligning the holes.

### Step 4:

Using a rubber hammer (or a standard hammer with cloth between the hammer and the plastic), pound the area near the holes on the side piece that is visible to you, causing the prongs to penetrate and lock into position; then turn the unit over and do the same for other side piece. The unit should now be assembled; double check to make sure all prongs are fully seated. Some people may be able to seat the prongs without a hammer - simply by pushing down from the top until the prongs snap in.

### Step 5 (if necessary)

Due to shipping the cases flat, occasionally the lid latching mechanism will not be tight. Simply pull on the front edge of the case in the direction shown and the latch will catch again.



Note: The LocDocBox can also be shipped assembled.